

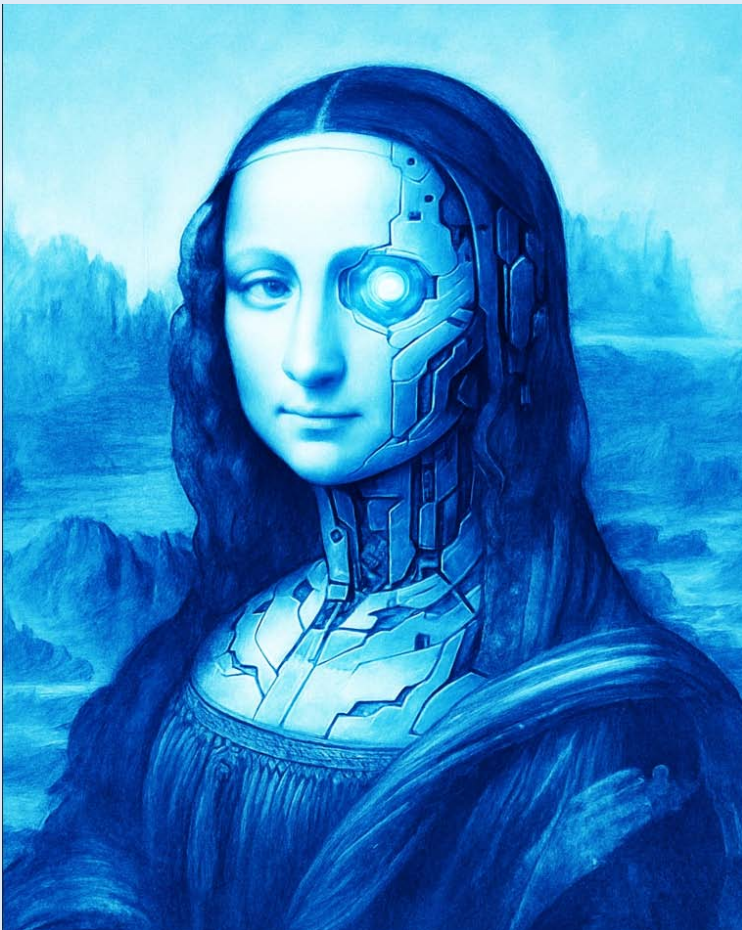


ENGL201.01 (class#)

Literary Analysis

Landscape & Mindscape

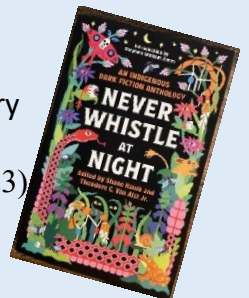
- What landscape brings about love?
- What horror haunts people's mindscape?
- What space do people hold for grief?



This course will expose you to traditional and modern critical approaches to literary texts and practice using these approaches to inform the department's three concentrations: English Education, Literature, and Creative Writing. We will read introductory remarks about various kinds of critical methods. We will also learn to engage those methods through seeing how respectable scholars and writers work with literary and nonliterary texts. Our thematic topic this semester is the landscape-mindscape of Love, Horror and Grief. We will consider a range of connections between the land and the mind, including the power of imagination, the tension between technology and human consciousness, the reduction of ecology to landscaping, and the human-centered imagination of land, as well as information technology's deep shaping of the human mind. I invite you to explore the fluid and complex relationship between landscape and mindscape.

Course material may include: Mary

Shelley—*Frankenstein* (1818), Fitzgerald, F. Scott. *The Great Gatsby* (1925), Kazuo Ishiguro's *Never Let Me Go* (2005), Shane Hawk and Theodore C. Van Alst, Jr, *Never Whistle at Night* (2023)
Selected films: *Ghost in the Shell 2: Innocence* (2004); *Blade Runner 2049* (2017);
Expelled from Paradise (2014) ; *Possessor* (2020)



Dr. Wo MW to :50 PM 7 202

Meet major requirements. Students from all tracks are welcome.

Illustration:
Cyborg Monalisa by chatgpt